



Creekside

Square Footage:

Main Level: 1260 square feet

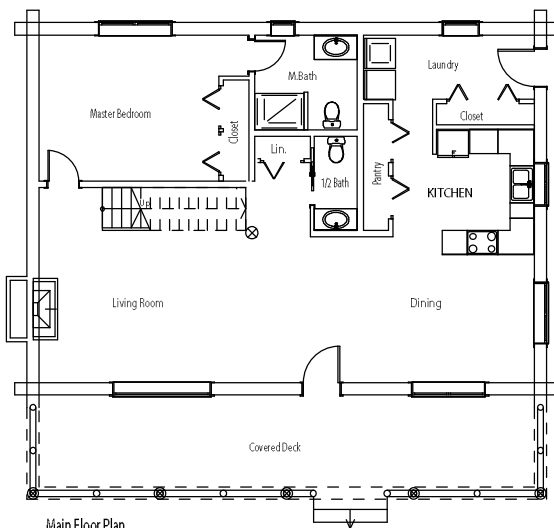
Upper Level: 1089 square feet

Total: 2349 square feet

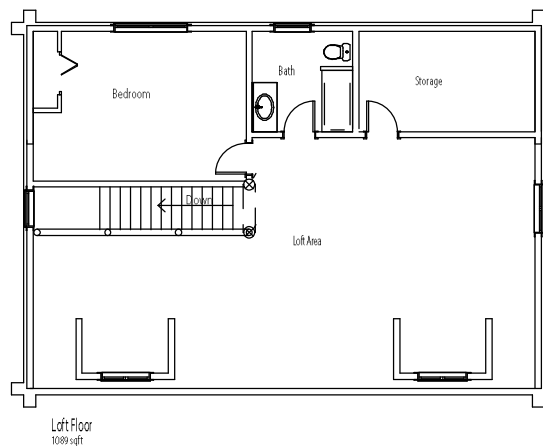
You know just what you want when you look at this straight forward Caribou design. A traditional story and a half with a high roof pitch, two gable dormers on the front and a shed dormer across the back. You will enjoy living on one level until the company arrives. Don't worry there's plenty of room. The full shed dormer pops up to add usable space to the bedroom, bathroom and storage area. With the dormers up front, you can easily add a couple more bedrooms or just leave it open and build in bunks. Why not build your new log home close to the creek? This home will be perfect.

Options:

Structural Insulated Panels, conventional framing package, weather-tight packages, Andersen, Pella, or Milgard window packages. These are available with any Caribou package.



Main Floor Plan
1260 sqft



Loft Floor
1089 sqft

